TRANSMITTAL MEMORANDUM

DEPARTMENT OF PUBLIC WORKS

DATE: July 20, 1967FOR: BOARD OF SUPERVISORS AGENDA OF July 31, 1967

FROM: STEFFANI, DESIGN, PUBLIC WORKS

TITLE: RESOLUTION OF THE BOARD OF SUPERVISORS RELATING TO THE  
ADOPTION OF A PORTION OF CAPITOL EXPRESSWAY AS COUNTY HIGHWAY  
PROPERTY AND NOTICE TO THE CITY OF SAN JOSE TO MAINTAIN AND  
CONTROL TRAFFIC SIGNALS.

DESCRIPTION:

This segment of Capitol Expressway extends from  $\frac{1}{4}$  mile  
westerly to  $\frac{1}{4}$  mile easterly of the Monterey Road. The right of  
way and construction were accomplished in accordance with agreements )  
between the County of Santa Clara and the City of San Jose dated  
June 24, 1963 and July 1, 1963.

This resolution establishes the limits of maintenance  
responsibility.

Approval is recommended.

ECS:WW:vlh  
Attachments

AGENDA DATA

DATE: \_\_\_\_\_

ITEM NO: \_\_\_\_\_

BOARD ACTION \_\_\_\_\_

APPROVED:  
JAMES T. POTT, COUNTY ENGINEER

August 3, 1967

Mr. Roy H. Hubbard  
Assistant City Clerk  
City of San Jose  
First and Mission Streets  
San Jose, California

Subject: Resolution re Capitol Expressway as County Hwy  
property, and Notice for San Jose to maintain  
and control Traffic Signals

Dear Mr. Hubbard:

Enclosed you will find a certified copy of a resolution relative to adoption of a portion of Capitol Expressway as County Highway property and Notice to City of San Jose to maintain and control traffic signals. This resolution was adopted by the Board of Supervisors of Santa Clara County at its meeting on July 31, 1967.

The original of this resolution and the map are being forwarded to the Recorder's office for recording. The enclosed copy is for your records.

Very truly yours,

BOARD OF SUPERVISORS

Donald M. Rains  
Assistant Clerk of the Board

DMR:jc  
Encl.

cc: Public Works Dept. (3 - Resals' & maps)

FILED FOR RECORD  
AT REQUEST OF Book 7584 Page 612  
BOARD OF SUPERVISORS  
OFFICIAL RECORDS  
SANTA CLARA COUNTY  
PAUL F. ELLIOTT  
RECORDER  
Dec 8 1 11 PM 1966

RESOLUTION RELATING TO RELINQUISHMENT  
OF COUNTY HIGHWAY PROPERTY AND NOTICE  
TO CITY OF San Jose TO RESUME  
CONTROL AND MAINTENANCE OF RELOCATED  
AND RECONSTRUCTED CITY STREETS

WHEREAS, the County of Santa Clara did on the 24th day of June 1963, and the City of San Jose on the 1st day of July 1963 enter into an agreement providing for the closing and/or relocating of existing city streets by the County and also providing for the construction by the County of Capitol Expressway between Narvaez Avenue and Tuers Road; and

WHEREAS, a portion of the construction provided for in the agreement and shown on the attached Exhibit "A" has been completed by the County.

NOW, THEREFORE, BE IT RESOLVED by the Board of Supervisors of the County of Santa Clara that the County hereby adopts, as County highway property, all the roads and portions thereof as indicated by shading on the attached Exhibit "A", and the County, as provided for in said agreement and in accordance with Streets and Highways Code Section 1731, does hereby relinquish to the City, and does hereby notify the City to resume control and maintenance of the relocated or reconstructed city streets, frontage roads and other local roads within the city limits, constructed by the County and shown on the attached Exhibit "A".

PASSED AND ADOPTED by the Board of Supervisors of the County of Santa Clara, State of California, on DEC 5 1966 by the following vote:

AYES:	Supervisors	Della Maggiore Spangler Mehrkens Sanchez Quinn
NOES:	Supervisors	None
ABSENT:	Supervisors	None

Charles A. Quinn  
Chairman, Board of Supervisors

ATTEST: JEAN PULLAN, Clerk  
Board of Supervisors

Jean Pullan

GFS:gc

11/16/66 TO BE RECORDED

cc: P/w 12-16-66

Approved as to Form

Harry M. Mordue  
Deputy County Counsel

RECEIVED  
CLERK OF SUPERVISORS  
DEC 16 10 30 AM '65  
COUNTY OF  
SANTA CLARA

RESOLUTION RELATING TO THE ADOPTION OF A  
PORTION OF CAPITOL EXPRESSWAY AS COUNTY  
HIGHWAY PROPERTY AND NOTICE TO THE CITY  
OF SAN JOSE TO MAINTAIN AND CONTROL  
TRAFFIC SIGNALS

WHEREAS, the County of Santa Clara did on the 24th day of  
June 1963, and the City of San Jose on the 1st day of July 1963  
enter into an agreement providing for the construction by the County  
of Capitol Expressway between Narvaez Avenue and Tuers Road; and

WHEREAS, a portion of the construction provided for in the  
agreement and shown on the attached Exhibit "A" has been completed.

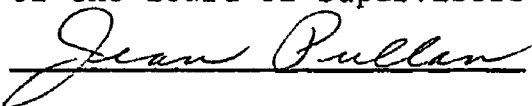
NOW, THEREFORE, BE IT RESOLVED by the Board of Supervisors of  
the County of Santa Clara that the County hereby adopts, as County  
highway property, all the roads and portions thereof as indicated  
by shading on the attached Exhibit "A". County of Santa Clara does  
hereby notify the City of San Jose to immediately maintain and  
control the traffic signals as shown on the attached Exhibit "A",  
and County of Santa Clara will maintain and control all other areas  
shaded on said Exhibit "A".

PASSED AND ADOPTED by the Board of Supervisors of the County of  
Santa Clara, State of California, on JUL 31 1967 by  
the following vote:

AYES: Supervisors Della Maggiore Spangler Mehrkens Sanchez Quinn  
NOES: Supervisors None  
ABSENT: Supervisors None

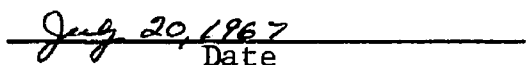
  
Chairman, Board of Supervisors

ATTEST: JEAN PULLAN, Clerk  
of the Board of Supervisors



Approved as to Form:

  
Deputy County Counsel  
Assistant

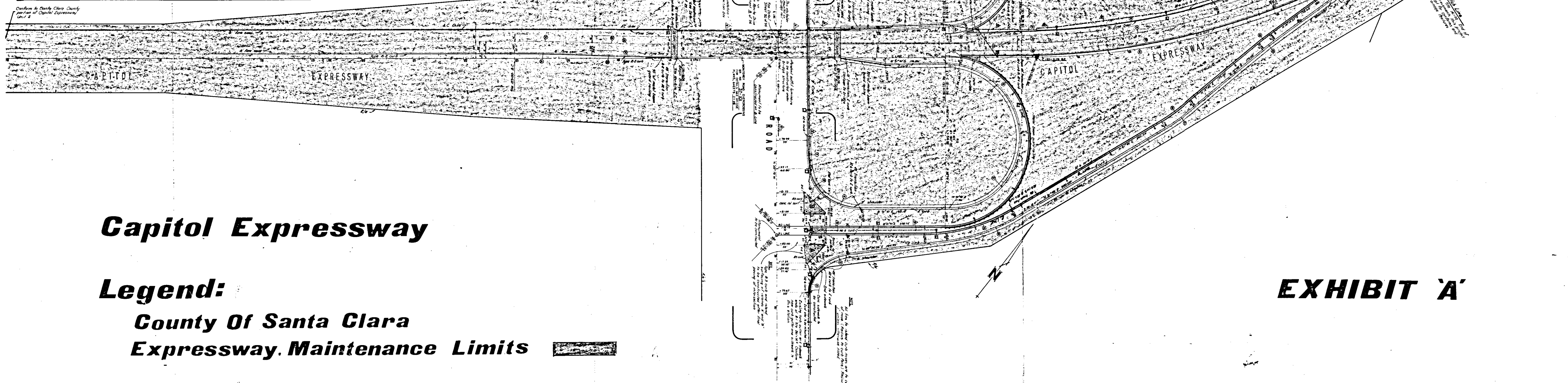
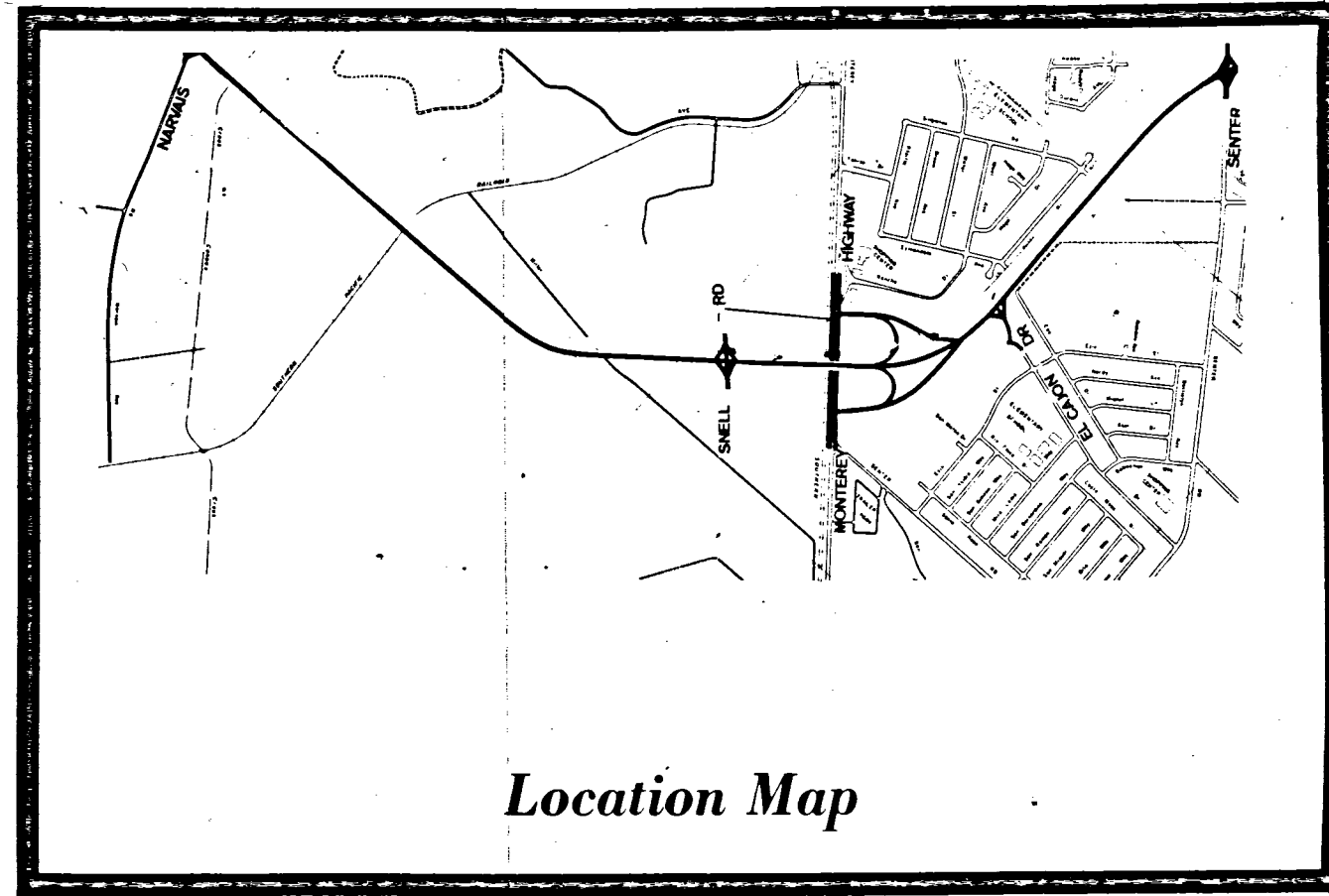
  
Date

AFTER RECORDING RETURN TO  
Board of Supervisors  
Room 524  
70 West Hedding Street  
San Jose, California  
95110

TO BE RECORDED

JUL 31 1967

RECORDERS MEMO: Legibility of writing, typing or printing UNSATISFACTORY in this document when received.



# **Capitol Expressway**

**Legend:**  
**County Of Santa Clara**  
**Expressway Maintenance Limits**

**EXHIBIT 'A'**

AFTER RECORDING RETURN TO  
 Board of Supervisors  
 Room 524  
 70 West Hedding Street  
 San Jose, California  
 95110

EXPRESSWAY AGREEMENT  
CAPITOL EXPRESSWAY - CITY OF SAN JOSE

THE FOLLOWING is an Agreement between the COUNTY OF SANTA CLARA (hereinafter called "County") and the CITY OF SAN JOSE (hereinafter called "City");

WHEREAS, County has adopted a resolution on June 24, 1963, determining that a county highway be established partly within the City of San Jose to be constructed as a portion of the Capitol Expressway; and

WHEREAS, a plan map for such expressway has been prepared showing the proposed expressway plan of County as it affects streets of City, including provisions for closing City streets, for carrying City streets over or under or to a connection with such expressway, for relocation of City streets, and for construction of frontage roads and other local roads;

NOW, THEREFORE, IT IS AGREED:

1. City agrees and consents to the closing by County of existing City streets, relocation by County of existing City streets, construction by County of expressway, frontage roads, and other construction affecting existing City streets, between Narvaez Road and Tuers Road, all as shown on the plan map attached hereto and marked Exhibit "A" and made a part hereof by reference. All of the costs of the foregoing, including, but not limited to, the payment of compensation for the taking or damaging of private property, shall be borne by County.

2. County, in the construction of said expressway, will at County's expense make such changes affecting City streets in accordance with the said plan attached hereto, or as the same may hereafter be modified by subsequent agreement between the parties hereto.

c.c. Pub. Works  
Co. Council

Date JUN 24 1963  
APPROVED [Signature]  
FILED [Signature]  
NO: [Signature]

- 2 -



32b  
June 25, 1963

To: James T. Pott, Department of Public Works

Subject: EXPRESSWAY AGREEMENT - CITY OF SAN JOSE - CAPITOL EXPRESSWAY

Attached hereto are five (5) copies of Expressway Agreement with the City of San Jose relating to Capitol Expressway, in accordance with your memo of June 17th to James B. Enochs.

The Board of Supervisors at its regularly scheduled meeting of June 24, 1963, authorized its Chairman to execute this Expressway Agreement on behalf of the County.

It is our understanding that your office will secure the signatures of the City of San Jose and that a fully executed copy will be returned to this office, as stated in your memo.

Very truly yours,

BOARD OF SUPERVISORS

Mrs. Jean Pullan  
Clerk of the Board

JP:DMR:kb  
Attachments

Original & 4 - Public Works  
1 copy - Board pending file

# MEMORANDUM

To: James B. Enochs

From: James T. Pott

SUBJECT: Agenda - June 24, 1963

Date: June 17, 1963

RESOLUTION DECLARING THAT CAPITOL EXPRESSWAY BETWEEN NARVAEZ AND TEURS IS A COUNTY HIGHWAY

*TEURS*

EXPRESSWAY AGREEMENT WITH CITY OF SAN JOSE FOR CAPITOL EXPRESSWAY BETWEEN NARVAEZ AND TEURS *TEURS*

RESOLUTION DECLARING THAT CAPITOL EXPRESSWAY BETWEEN NARVAEZ AND TEURS TO BE A FREEWAY

*TEURS*

This paper needs to be executed in the order above stated. It is the necessary paper work associated with placement of this portion of Capitol Expressway in line for funding under the Phase I Bond Program. The policy resolution authorizing placement of Capitol Expressway in Phase I has already been approved by Trafficways and the Board of Supervisors on April 1, 1963.

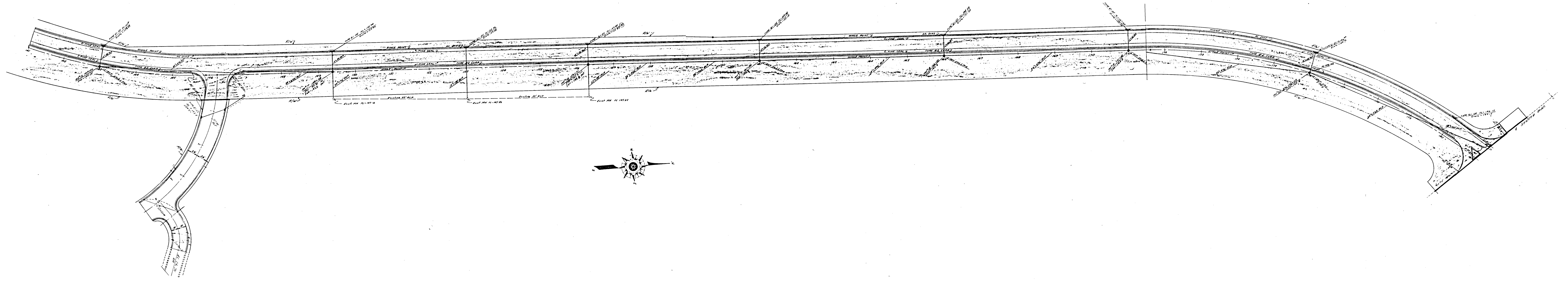
By action on June 17, the Board approved application for Urban Extension Funds for this project to provide an additional source of financing to the Expressway System - particularly this project. Appropriate exhibits will be on the Board Chambers wall on June 24.

Concurrent paper is being executed by the City of San Jose in an effort to beat the July 1, deadline for paper work on this project. As a result, it would be appreciated if all paper to be executed by Board would be returned to this office as soon as possible following execution. This office will then insure that signatures appear properly on one set of paper. Following this operation, appropriate paper fully executed will be delivered to the Clerk of the Board.

JTP:ee

cc: ECS, JEAN PULLAN

ATTACHMENT



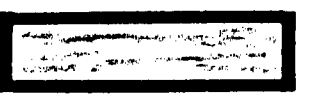
Department of Public Works

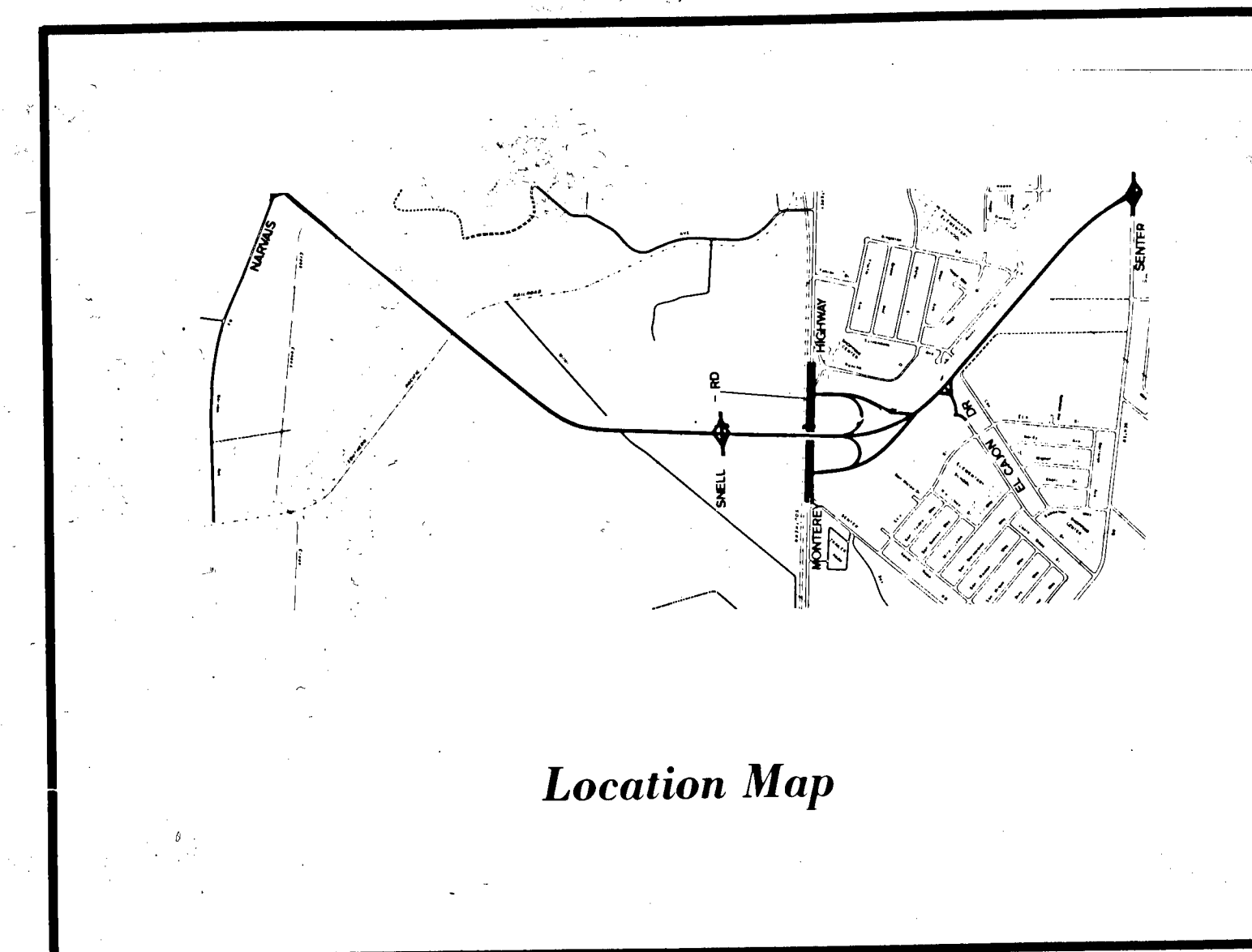
CAPITOL EXPRESSWAY  
UNIT II

EXHIBIT A

Legend

County of Santa Clara  
Expressway Maintenance Limits





Location Map

